

# BERKSWELL BATTERY ENERGY STORAGE SYSTEM

Indicative image not representative  
of scheme design

Invitation to two public consultation events:

**Thursday 2nd  
February 2023**

14.00-19.00

Balsall Common Village  
Hall, 112 Station Road, Balsall  
Common, CV7 7FF

**Wednesday 8th  
February 2023**

14.00-19.00

Jordan Room, St. John  
Baptist Church, Church Lane,  
Berkswell, CV7 7BJ



**ANGLO  
RENEWABLES**

In Partnership with  
**Berkswell Charities**



**KEY**

- Pre-Application boundary line (12,061 m<sup>2</sup> approx.)
- Landlord-retained land
- Existing tree (illustrative only)
- Existing overhead electricity cable and pole (illustrative only)
- Existing electricity transmission line (overhead) (illustrative only)
- Proposed underground electric cable to point of connection

## INTRODUCING BERKSWELL BESS

Anglo Renewables is preparing to submit a planning application to Solihull Metropolitan Borough Council for a battery energy storage system (BESS) on land to the east of Hodgetts Lane, Burton Green, Coventry, near CV8 1PH.



Indicative image not representative of scheme design

## WHY DO WE NEED BATTERY ENERGY STORAGE SYSTEMS (BESS)?

BESS allow renewable energy to be efficiently stored and supplied to the grid when it's needed. With BESS we can use renewable energy to power our homes and businesses when the wind stops blowing and the sun isn't shining. BESS facilities store electricity when demand is low or there is over-supply and release it back to the grid when demand is high. Moreover, they can provide 'system security', supplying energy during electricity outages, thus minimising disruption and costs.

Draft Government Policy (EN-1) makes clear that energy storage has a key role to play in achieving Net Zero and providing flexibility to the energy system, so that high volumes of low carbon power, heat and transport can be integrated. The National Grid estimates that over 100GWh of energy storage will be required to meet the UK's Net Zero target by 2050.

## WHAT ARE THE BENEFITS OF THE BESS?

- It will assist Solihull Metropolitan Borough Council in meeting its pledge to become a carbon-neutral authority by 2041, in addition to supporting its response to the Climate Emergency the Council declared in October 2019.
- Introducing BESS into the energy mix allows the electricity network to “balance” generation against demand, supporting the UK’s urgent need for energy security.
- The BESS would support the UK’s transition to a low carbon future, hitting its target of cutting carbon emissions by 78% by 2035.
- BESS maximises the use of renewable energy sources and reduces the need for expensive imported gas and fossil fuel power plants.
- It would help the National Grid to use renewable energy to power our homes and businesses when there’s minimal wind and no daylight.
- It will provide flexibility through rapid charge or discharge of electricity to allow the National Grid to regulate electricity supply and demand whilst minimising greenhouse gas emissions.
- No public rights of way will be closed during or after construction of the proposed development.
- New hedgerow planting is proposed and existing hedgerows will be gapped up, contributing to the overall biodiversity and landscape scheme which will be developed as part of the scheme.
- The proposed scheme will not require any Government subsidy.
- Anglo Renewables is committed to using local suppliers during construction and operation where possible.
- There will be minimal noise associated with the BESS. A noise assessment will be undertaken to identify potential noise implications and to propose mitigation measures if they are deemed necessary.
- A welfare unit and storage container will be installed as part of the proposal to ensure the safety of the BESS and the surrounding area.



### COMMUNITY BENEFIT

This project is subject to local business rates and will generate significant income for Solihull Metropolitan Borough Council. Over its lifecycle, this project will generate millions of pounds which will help fund local services. In addition to this, the rent the BESS facility provides (if approved) will allow Berkswell Charities to fund initiatives in the local area.

### CLIMATE EMERGENCY

Solihull Metropolitan Borough Council is committed to tackling climate change. In 2019, Solihull Metropolitan Borough Council declared a climate emergency and pledged to reduce the Borough’s CO2 emissions to Net Zero by 2041. Solihull Metropolitan Borough Council’s Net Zero Action Plan highlights the need for battery energy storage schemes in order to achieve Net Zero.

# PUBLIC CONSULTATION



- 1 Attend our public consultation events on:**  
**Thursday 2nd February 2023 from 14:00 to 19:00** at Balsall Common Village Hall, 112 Station Road, Balsall Common, CV7 7FF.  
**Wednesday 8th February 2023 from 14:00 to 19:00** at Jordan Room, St. John Baptist Church, Church Lane, Berkswell, CV7 7BJ.

You are invited to attend our public consultation events at which you can see our plans, learn more about our proposals and talk to the project team.

- 2 Fill in the feedback form that accompanies this public consultation brochure.**  
Please read through the leaflet and provide feedback to us by way of the freepost feedback form that came with the brochure.
- 3 Visit the dedicated public consultation website: [www.berkswellbess.co.uk](http://www.berkswellbess.co.uk).**

We have set up a dedicated public consultation website, where you can find information about our draft proposals and provide feedback.

## INDICATIVE TIMESCALES

**February 2023**  
Pre-submission consultation



**March 2023**  
Finalise proposed design



**May 2023**  
Submit planning application



**August 2023**  
Planning decision



**2024/2025**  
Construction (if granted approval)



Anglo Renewables is working at the forefront of the UK's transition to a greener, low carbon economy through identifying and developing solar sites and BESS projects across the country. We are supporting the country's legislated target of reaching Net Zero by 2050 and the global movement to tackle climate change.

Energy storage can play a significant role in the UK's response to both the climate and biodiversity emergencies by supporting healthy ecosystems, whilst avoiding the emissions from fossil fuel burning power stations.



Indicative image not representative of scheme design

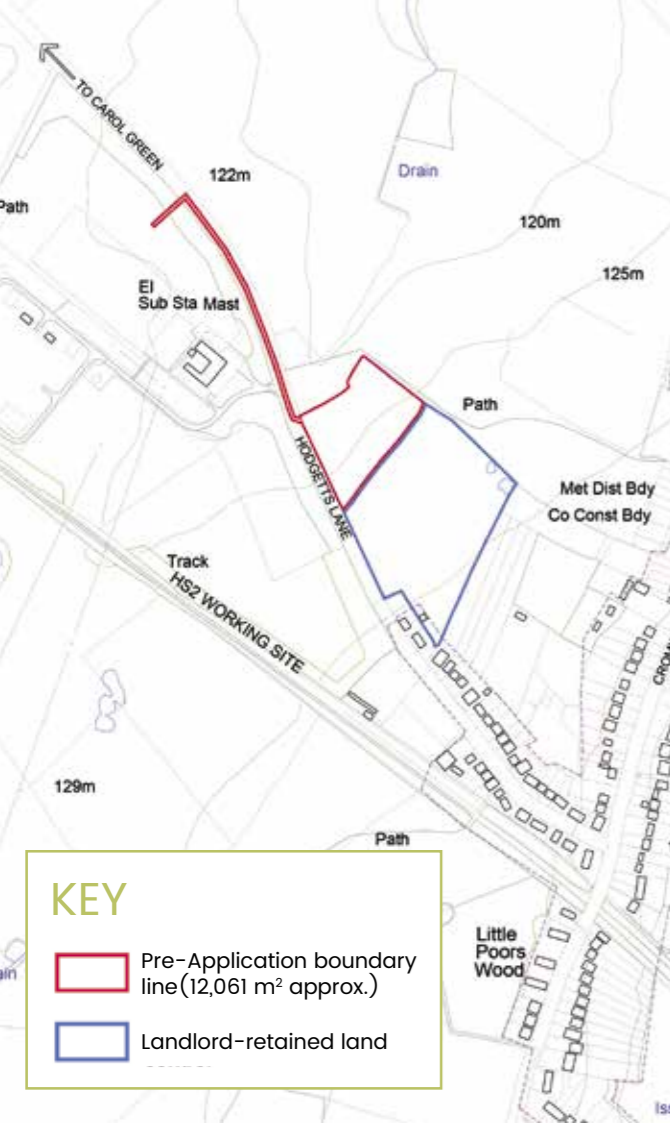
## ABOUT BERKSWELL CHARITIES

The land for the proposed BESS is owned by Berkswell Charities. Over the past 12 years, Berkswell Charities has provided approximately 1.6 million in funding to charitable causes.

Berkswell Charities have their roots in the 1450s with the village Church, St John Baptist, being integral to the relief of poverty. The aim of the Charity is to provide and maintain a site for a school in Berkswell and to relieve poverty by the provision of accommodation in the form of Almshouses, an early form of social or affordable housing.

In addition to this, the Charity provides donations to many organisations and initiatives in the local area. Local organisations such as Berkswell Scouts, Hornets Football Club, Heart of England School, Balsall Street Primary School, the Reading Room in Berkswell owned by the Lant Trust, the Jubilee Centre, and St Peters Church have all benefitted from donations from Berkswell Charities.

If the proposed development is approved, the rent the BESS facility provides will allow Berkswell Charities to fund more initiatives in the local area.



## WHERE IS THE PROPOSED BERKSWELL BESS?

The proposed development would be located on land to the east of Hodgetts Lane, Burton Green, Coventry, near CV8 1PH.

The site extends to approximately 3 acres. The proposal also includes biodiversity and landscape enhancement measures, such as new hedgerow planting and gapping up of existing hedgerows. This helps to contribute to the overall biodiversity and landscape scheme which will be developed as part of the scheme.


The development will include the construction of a battery storage compound within secure fencing. Within the fence perimeter will be battery storage containers, inverter units, Power control systems, DNO and customer control rooms and a customer switchroom. A servicing storage container will also be installed.

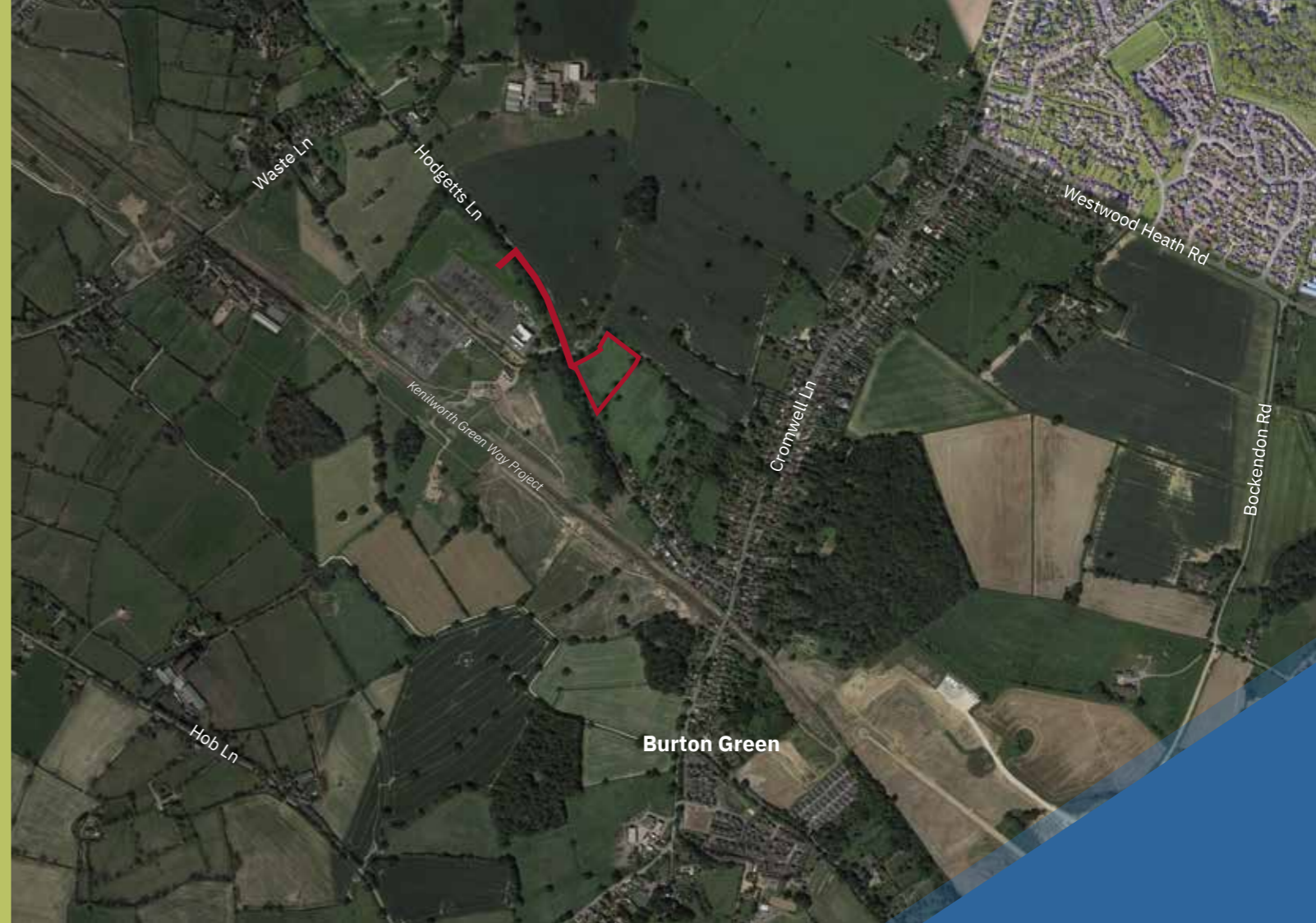
Access to the site will be via the existing access located close to the Berkswell substation.

Once operational, there will be minimal traffic generated by the proposals. The proposed development is temporary (40 years). The site will be restored to prior use once the proposed development has been decommissioned.

### KEY

 Pre-Application boundary line (12,061 m<sup>2</sup> approx.)

 Landlord-retained land



## HAVE YOUR SAY

Please take your time to consider the information within this brochure and don't hesitate to contact a member of our team should you have any questions or matters you need to be clarified.

We would be grateful if you could answer the feedback form and let us have your contact details for the purpose of informing the project design and providing feedback to Solihull Metropolitan Borough Council.

For further information, please do not hesitate to email [feedback@alpacacommunications.com](mailto:feedback@alpacacommunications.com)



## REGISTER FOR UPDATES

Please visit [www.berkswellbess.co.uk](http://www.berkswellbess.co.uk) where information about our proposals will be updated, and where you can register to receive updates.

## FEEDBACK FORM

To return your completed feedback form please tear it from the brochure and pop it in the post by **Wednesday 22nd February 2023**. Alternatively, you can return your form via email to [feedback@alpacacommunications.com](mailto:feedback@alpacacommunications.com)

Title:  Name:

Address:  Postcode:

Email:  Telephone:

- Has this brochure been helpful in understanding our proposal?  Yes  No  Not sure
- Do you support the proposals you have read about within this brochure?  
 Fully support  Broadly support  Do not support  Undecided
- Please use this space to provide any comments on the proposal. We would welcome your feedback on all aspects of the emerging design shown in the brochure.

Please provide your contact details if you wish to get a response. Any information provided will only be used for the purpose of the planning application to the Local Planning Authority and will not be disclosed with any third parties. **Your contact details will not be listed on the planning application documentation.**

**Freepost  
ALPACA COMMUNICATIONS LIMITED**

**FOLD HERE**

**Instructions**

To return your feedback form, please fold and put it in the post to us.

If you'd like more space to share your thoughts, send us an email, or just write your comments down and pop them in an envelope with 'FREEPOST ALPACA COMMUNICATIONS LIMITED' written on the front. You don't need any further address or stamp.

Any queries or problems? Get in touch via [feedback@alpacacommunications.com](mailto:feedback@alpacacommunications.com).