



WHERE IS BERKSWELL BESS?

Anglo Renewables is preparing to submit a planning application to Solihull Metropolitan Borough Council for a battery energy storage system (BESS) on land to the east of Hodgetts Lane, Burton Green, Coventry, near CV8 1PH.

Why do we need Battery Energy Storage Systems (BESS)?

BESS allow renewable energy to be efficiently stored and supplied to the grid when it's needed. With BESS we can use renewable energy to power our homes and businesses when the wind stops blowing and the sun isn't shining. BESS facilities store electricity when demand is low or there is over-supply and release it back to the grid when demand is high. Moreover, they can provide 'system security', supplying energy during electricity outages, thus minimising disruption and costs.

Draft Government Policy (EN-1) makes clear that energy storage has a key role to play in achieving Net Zero and providing flexibility to the energy system, so that high volumes of low carbon power, heat and transport can be integrated. The National Grid estimates that over 100GWh of energy storage will be required to meet the UK's Net Zero target by 2050.

BERKSWELL
BATTERY ENERGY
STORAGE SYSTEM



ANGLO
RENEWABLES

In Partnership with
Berkswell Charities



For illustrative purposes only – Indicative image not representative of scheme design

About Anglo Renewables

Anglo Renewables is working at the forefront of the UK's transition to a greener, low carbon economy through identifying and developing solar sites and BESS projects across the country. We are supporting the country's legislated target of reaching Net Zero by 2050 and the global movement to tackle climate change.

Energy storage can play a significant role in the UK's response to both the climate and biodiversity emergencies by supporting healthy ecosystems, whilst avoiding the emissions from fossil fuel burning power stations.

About Berkswell Charities

The land for the proposed BESS is owned by Berkswell Charities. Over the past 12 years, Berkswell Charities has provided approximately 1.6 million in funding to charitable causes.

Berkswell Charities have their roots in the 1450s with the village Church, St John Baptist, being integral to the relief of poverty. The aim of the Charity is to provide and maintain a site for a school in Berkswell and to provide accommodation for those in need in the form of Almshouses, an early form of social or affordable housing.

In addition to this, the Charity provides donations to many organisations and initiatives in the local area. Local organisations such as Berkswell Scouts, Hornets Football Club, Heart of England School, Balsall Street Primary School, the Reading Room in Berkswell owned by the Lant Trust, the Jubilee Centre, and St Peters Church have all benefitted from donations from Berkswell Charities.

If the proposed development is approved, the rent the BESS facility provides will allow Berkswell Charities to fund more initiatives in the local area.

BERKSWELL
BATTERY ENERGY
STORAGE SYSTEM



ANGLO
RENEWABLES

In Partnership with
Berkswell Charities



For illustrative purposes only – Indicative image not representative of scheme design

WHAT ARE THE BENEFITS OF THE BESS?



Climate Emergency

Solihull Metropolitan Borough Council is committed to tackling climate change. In 2019, Solihull Metropolitan Borough Council declared a climate emergency and pledged to reduce the Borough's CO2 emissions to Net Zero by 2041. Solihull Metropolitan Borough Council's Net Zero Action Plan highlights the need for battery energy storage schemes in order to achieve Net Zero.



Getting to Net Zero

In 2019 the UK Government became the first country in the world to declare a Climate Emergency. It has subsequently set a legally binding target of Net Zero emissions by 2050. The IPCC (Intergovernmental Panel on Climate Change) Sixth Assessment Report in 2022 has reiterated the urgent need for countries to change the way that we get our energy.



Community Benefits

This project is subject to local business rates and will generate significant income for Solihull Metropolitan Borough Council. Over its lifecycle, this project will generate millions of pounds which will help fund local services. In addition to this, the rent the BESS facility provides (if approved) will allow Berkswell Charities to fund initiatives in the local area.

BERKSWELL
BATTERY ENERGY
STORAGE SYSTEM



ANGLO
RENEWABLES

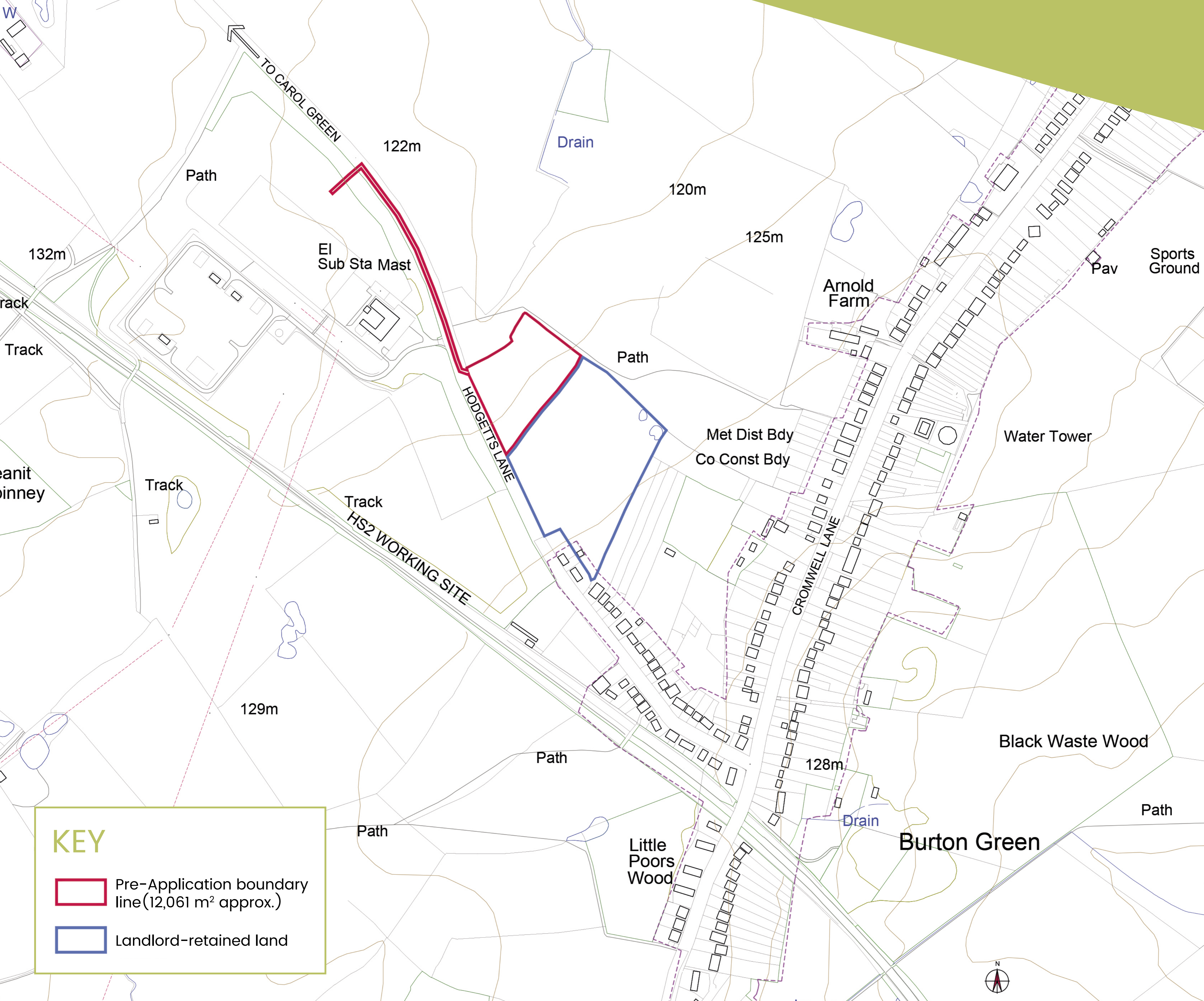
In Partnership with
Berkswell Charities



LOCAL BENEFITS OF THE BESS

- It will assist Solihull Metropolitan Borough Council in meeting its pledge to become a carbon-neutral authority by 2041, in addition to supporting its response to the Climate Emergency the Council declared in October 2019.
- Introducing BESS into the energy mix allows the electricity network to “balance” generation against demand, supporting the UK’s urgent need for energy security.
- The BESS would support the UK’s transition to a low carbon future, hitting its target of cutting carbon emissions by 78% by 2035.
- BESS maximises the use of renewable energy sources and reduces the need for expensive imported gas and fossil fuel power plants.
- It would help the National Grid to use renewable energy to power our homes and businesses when there’s minimal wind and no daylight.
- It will provide flexibility through rapid charge or discharge of electricity to allow the National Grid to regulate electricity supply and demand whilst minimising greenhouse gas emissions.
- No public rights of way will be closed during or after construction of the proposed development.
- New Hedgerow and tree planting is proposed and existing hedgerows will be improved and thickened, contributing to the overall biodiversity and landscape scheme which will be developed as part of the scheme.
- The proposed scheme will not require any Government subsidy.
- Anglo Renewables is committed to using local suppliers during construction and operation where possible.
- There will be minimal noise associated with the BESS. A noise assessment will be undertaken to identify potential noise implications and to propose mitigation measures if they are deemed necessary.
- A welfare unit and storage container will be installed as part of the proposal to ensure the safety of the BESS and the surrounding area.





KEY

- Pre-Application boundary line (12,061 m² approx.)
- Landlord-retained land

THE SITE

The proposed development would be located on land to the east of Hodgetts Lane, Burton Green, Coventry, near CV8 1PH.

The site extends to approximately 3 acres. The proposal also includes biodiversity and landscape enhancement measures, such as new hedgerow and tree planting and improving existing hedgerows. This helps to contribute to the overall biodiversity and landscape scheme which will be developed as part of the scheme.

The development will include the construction of a battery storage compound within secure fencing. Within the fence perimeter will be battery storage containers, inverter units, Power control systems, DNO and customer control rooms and a customer switchroom. A servicing storage container will also be installed.

The proposed development is temporary (40 years). The site will be restored to prior use once the proposed development has been decommissioned.

BERKSWELL
BATTERY ENERGY
STORAGE SYSTEM



ANGLO
RENEWABLES

In Partnership with
Berkswell Charities



CONSTRUCTION AND ACCESS

It is anticipated that 50-60 deliveries will be made by HGVs, vans and smaller lorries during the construction period. The construction period is 6-12 months, during which time lorry movements will be restricted to avoid peak periods and school times. These restrictions will form part of the Construction Traffic Management Plan which is being drawn up as part of the planning application. Once operational the site will be remotely monitored requiring only occasional maintenance visits.

BERKSWELL
BATTERY ENERGY
STORAGE SYSTEM



ANGLO
RENEWABLES

In Partnership with
Berkswell Charities

VIEWPOINTS



Historic Field boundary to be retained and reinstated
(South boundary of Site)



VIEWPOINTS



View across site from Southern corner showing established field boundaries

BERKSWELL
BATTERY ENERGY
STORAGE SYSTEM



ANGLO
RENEWABLES

In Partnership with
Berkswell Charities

VIEWPOINTS



Hodgetts Lane boundary of site

BERKSWELL
BATTERY ENERGY
STORAGE SYSTEM



ANGLO
RENEWABLES

In Partnership with
Berkswell Charities

VIEWPOINTS



Hodgetts Lane boundary with the site
(site on right hand side)



VIEWPOINTS



View across site from Hodgetts Lane looking north

BERKSWELL
BATTERY ENERGY
STORAGE SYSTEM



ANGLO
RENEWABLES

In Partnership with
Berkswell Charities

VIEWPOINTS



View North across site from Hodgetts Lane

BERKSWELL
BATTERY ENERGY
STORAGE SYSTEM



ANGLO
RENEWABLES

In Partnership with
Berkswell Charities